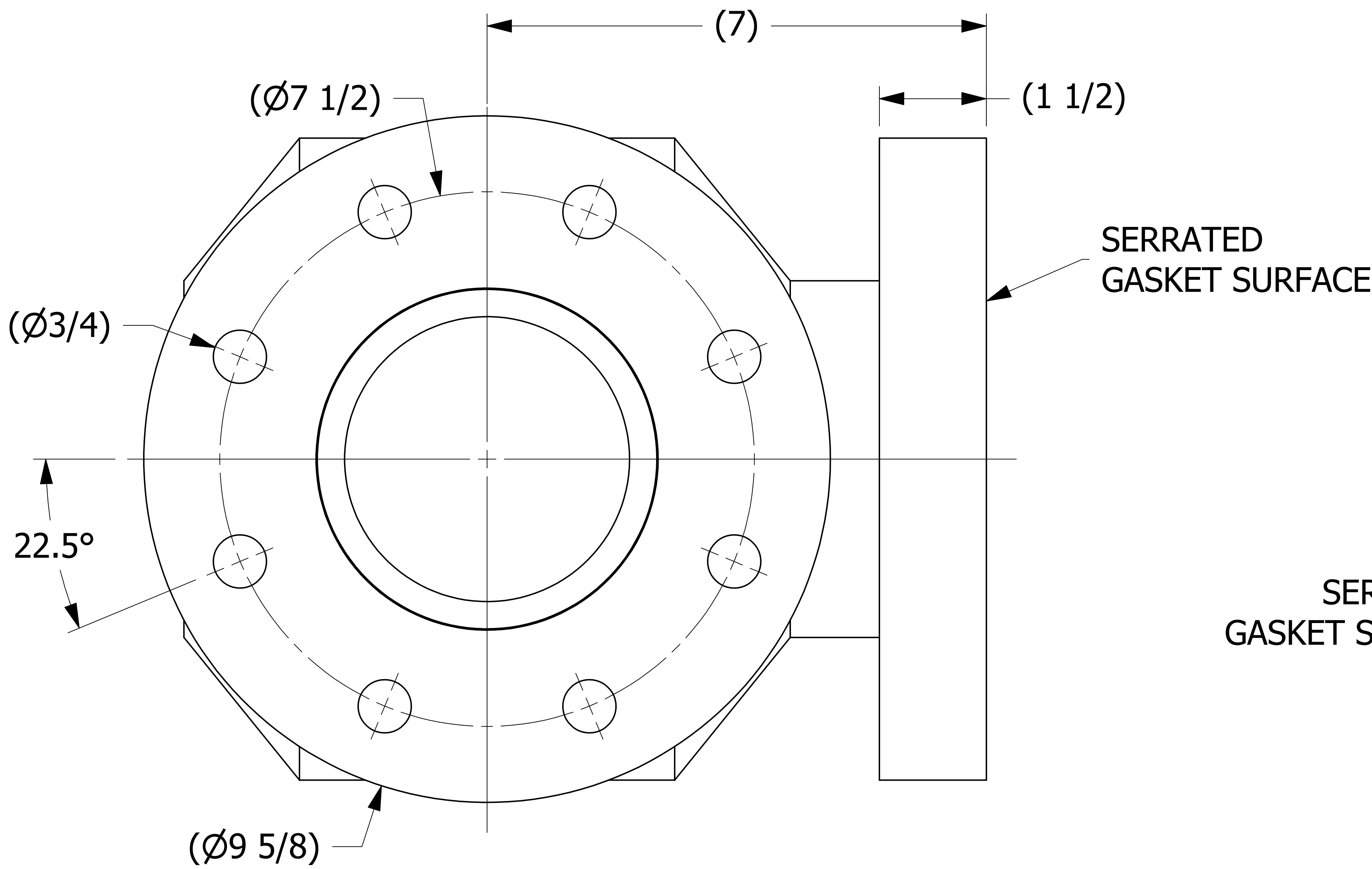
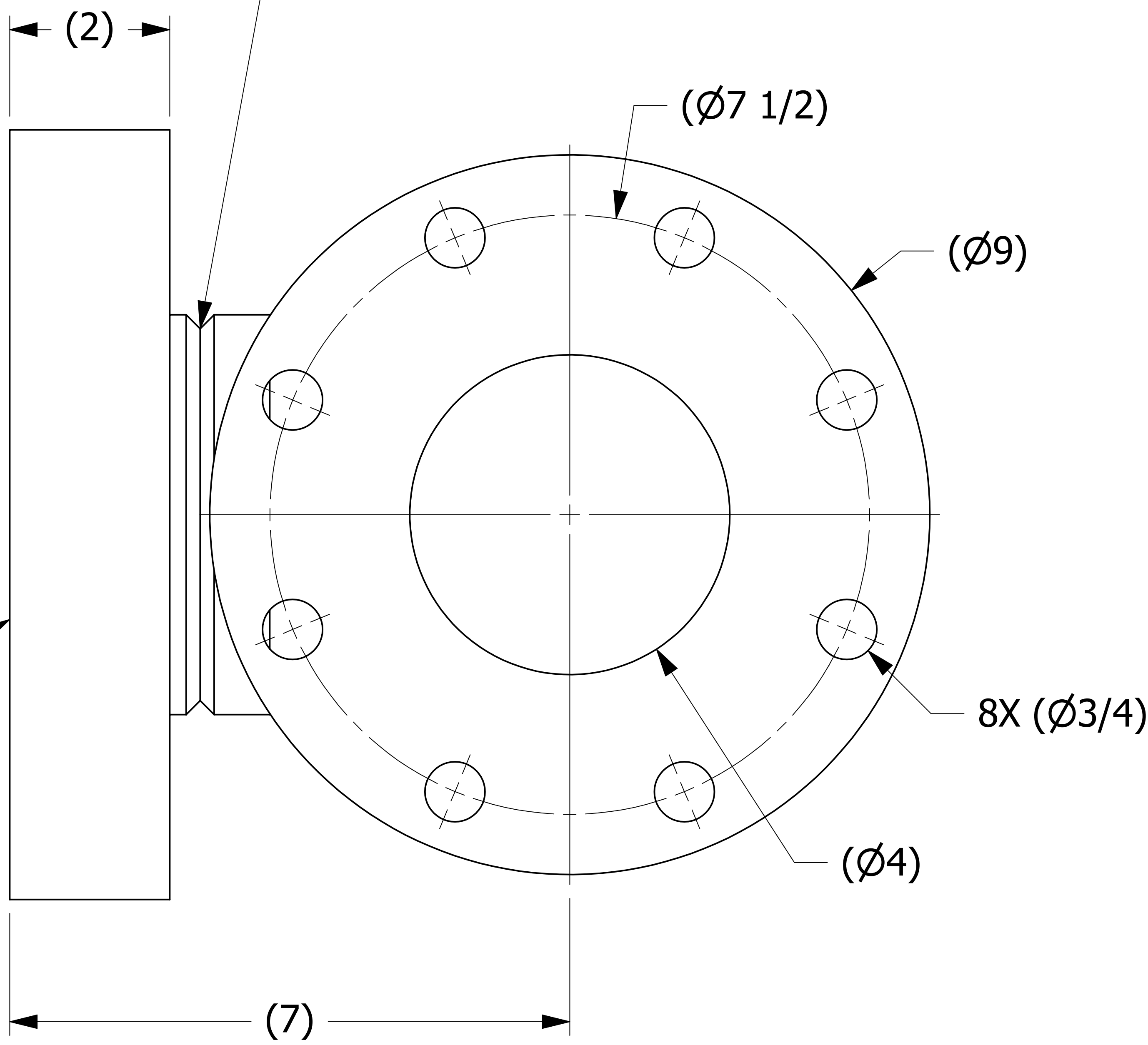


SALES DRAWING



SERRATED  
GASKET SURFACE

SHEAR GROOVE



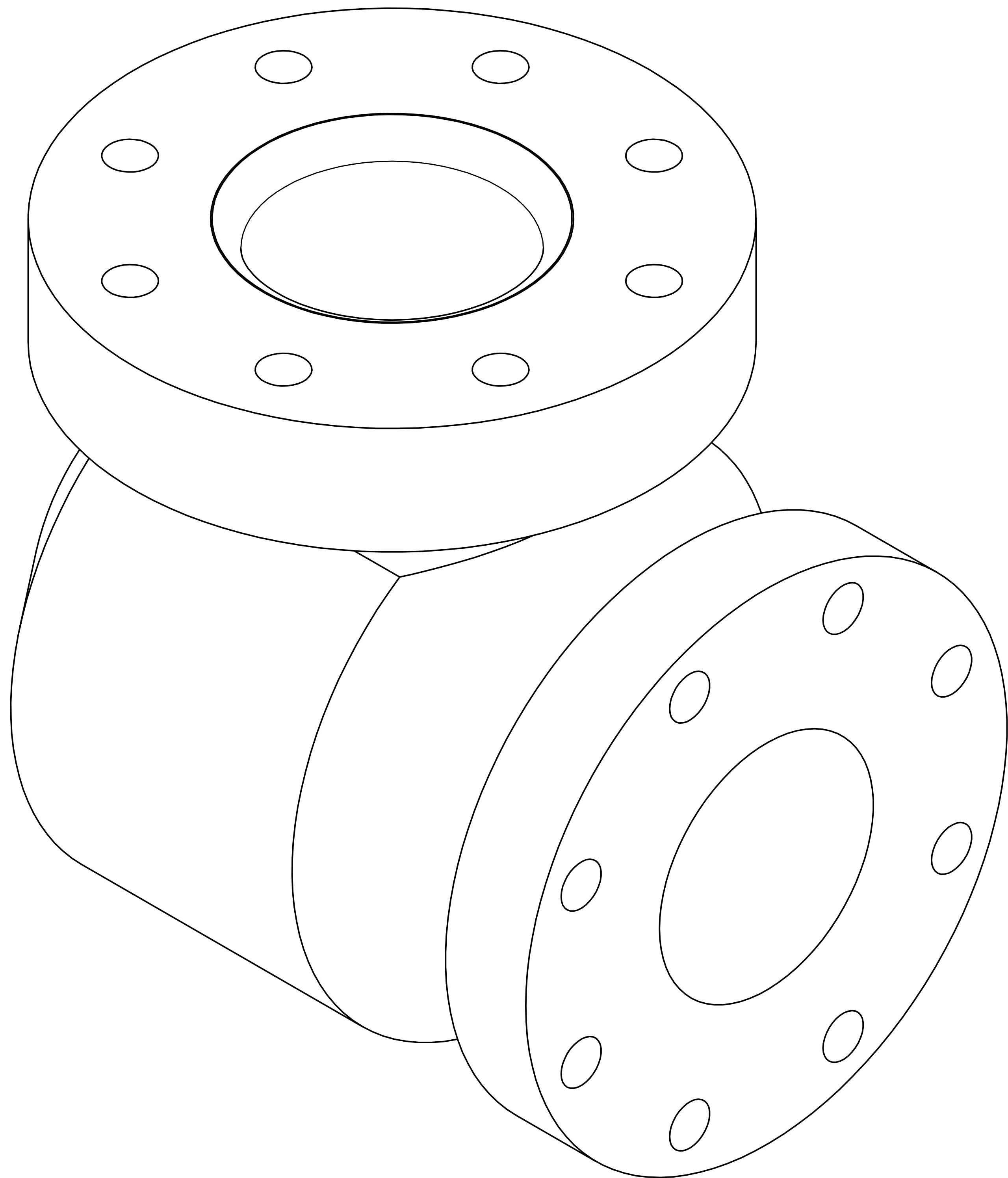
SERRATED  
GASKET SURFACE

(7)

8X  $(\phi 3/4)$

$(\phi 4)$

NOTE:  
SOLD TO WORLEY WELDING ONLY.



ISOMETRIC VIEW

SALES DRAWING

D	GS	1-14-13	UPDATED TITLE BLOCK, DIMS, & LEADER NOTE
C	GDS	7-28-11	ADDED MARKING PRESSURE NOTE
B	VD	09-02-10	REPLACED HS958 W/ HS4FLGS, UPDATED NOTES.
A	CHL	1-21-10	NEW PART ADDED TO SYSTEM
REV	BY	DATE	DESCRIPTION

UNLESS OTHERWISE SPECIFIED DIMENSIONAL TOLERANCES FRACTIONAL: $\pm 1/16$ X.XX: $\pm .03$ X.XXX: $\pm .015$ ANGULAR: $\pm 1^\circ$ DEBURR ALL SHARP EDGES. ALL MACHINED SURFACES TO HAVE A 125 RMS FINISH UNLESS NOTED OTHERWISE.	DRAWN BY: CHECKED BY: PROTOTYPE BY: PROTOTYPE DATE: APPROVED FOR PRODUCTION BY: PRODUCTION DATE:	REH PJG REH 8/14/2009 PJG 1/21/2010
THIRD ANGLE PROJECTION		

PART NAME: <b>ELBOW 4"</b>		
MATERIAL: <b>SALCO PE</b>		
PROJECT #: <b>WAG0870</b>	SHEET #: <b>1 OF 1</b>	SCALE: <b>1:1</b>
DRAWING #: <b>E27337</b>	PART #: <b>HS4X90PE1</b>	